

Project : Treacy House

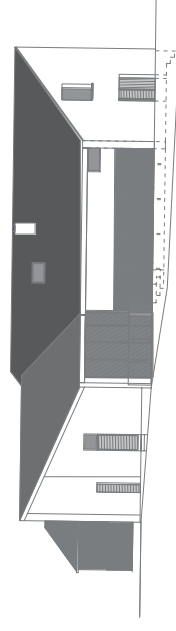
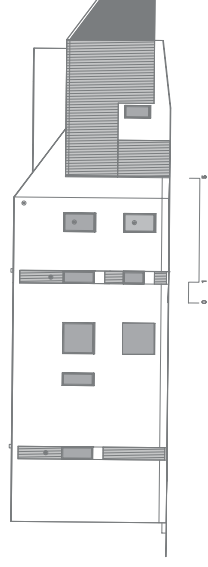
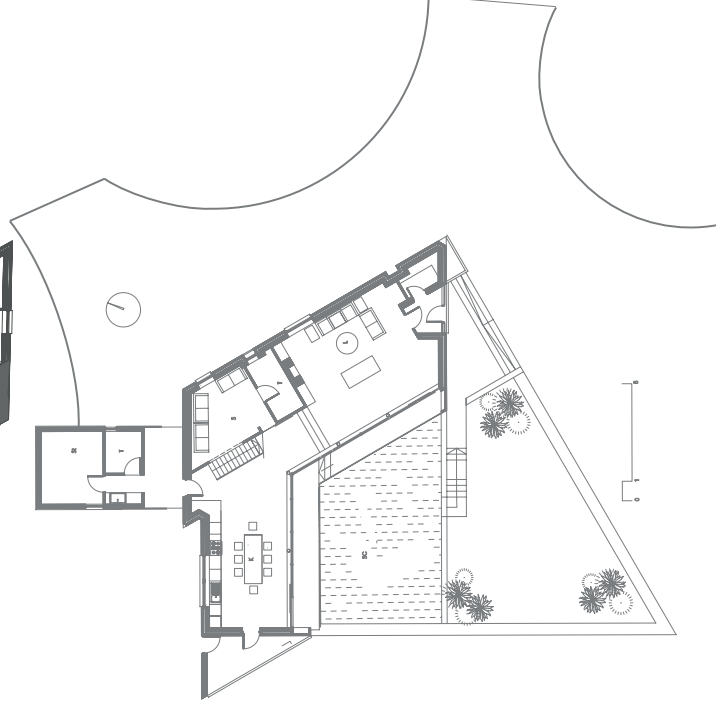
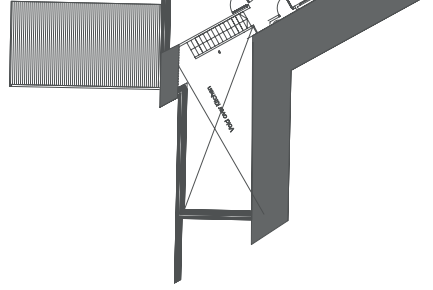
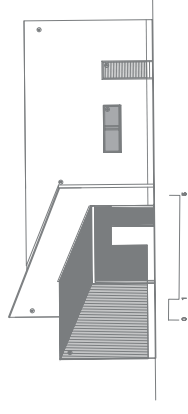
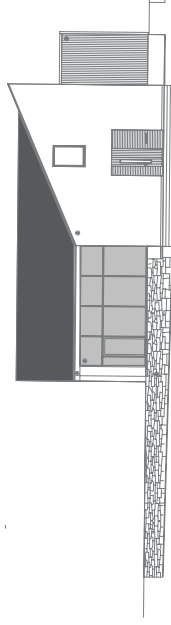
Location : Roundstone West Coast Ireland

Area : 200 m2

Stage : Completed

Description :

Split level two storey 3 bedroom house in a sensible protected area the skewed courtyard layout is inform by the stiff planning guidelines and an movement to catch views and solar gains in all living areas whilst providing shelter and privacy by means of a sunken courtyard



**SOTOPARRA**

architecture + design ltd.

Knockmore Ballyliffing County Mayo Ireland  
t: +353 (0) 94 9258905  
f: +353 (0) 94 9258926  
e: juansotoparra@gmail.com  
w: www.sotoparra.com